

# Llano Uplift Archeological Society



**Check out our LUAS website.**

Newsletter  
Volume 34 Issue 1  
MAY 2025

**LUAS meetings are free and open to the public**

***Please note our meeting location:  
The Falls on the Colorado Museum  
2001 Broadway, Marble Falls***

***We do not have a meeting scheduled  
for May 2025***

***We hope to have a talk for later this  
summer. We will announce times later.***

## **Travis County Archeological Society**

The next regular meeting will be on the third Tuesday of the month at 7pm at Casa Chapala's Austin location, 9041 Research Blvd., Suite 100 (Hwy 183 and Burnet Rd.) Meetings are held on the third Tuesday of each month, except June and December. They are free and open to the public. For those who wish to come early, we gather around 5:45 PM for dinner, drinks, and fellowship. The short business meeting starts at 7:00 PM, followed by the guest speaker's presentation.

**Tiffany Osburn** (Deputy State Archeologist, THC, TAS) speaking on

**Texas Archeological Society Field School 2025: Survey along the Camino Real near Rancheria Grande and the Tonkawa Tribe's Red Mountain.**

---

**TAS Field School  
June 14—June 21**

**LUAS hopes to have its first meeting of the year sometime in mid summer. A speaker has been tentatively lined up - details will come in the next newsletter.**

Since January, LUAS has been having regular field trips for members during which four new archaeological sites were recorded and many more previously recorded sites revisited. Below are photos from some of these excursions from earlier in the year.

The four photos below were taken by Robin Matthews during a May field trip to a property on Sulphur Creek near Lampasas. One new occupation site on a bluff overlooking the creek was recorded, dating to the Archaic and Late Prehistoric.









March field trip to Wagon Springs Ranch near Burnet during which a late nineteenth century homestead was recorded. Photo by Hayden Whitsett and Chuck Hixson



Photos from the Antelope Draw site in western Lampasas County. In April an excavation unit was started on the edge of a burned rock midden where a shovel test encountered a possible hearth or oven dating to the transition between the Archaic and Late Prehistoric periods. Work on this unit is still in progress.



In January, February, and April, LUAS investigated a Late Archaic site at Museo Benini near Marble Falls. After completion of the project, LUAS presented the museum with a poster (content by LUAS; design by Nancy Self), which will be displayed along with the recovered artifacts in their reception room.

# BENINI ARCHAEOLOGICAL SITE

The Benini Archaeological Site was first discovered by Lorraine Benini when she noticed flint artifacts on the surface in one small area on the grounds of Museo Benini. The site had not been previously reported and little was known about it other than it must have been occupied by Native Americans in the distant past. In early 2025, the Llano Uplift Archeological Society conducted a survey and test excavation to learn the size, artifact density, and age of the site.



The survey mostly involved shovel testing where small holes were dug and the fill screened through a wire mesh to recover small artifacts. Shovel tests were necessary because most of the prehistoric material was buried. The tests showed that the artifacts occur in the upper 30 cm (12 inches) of soil and extend over an area of about one acre. One 2x2-meter test excavation was also done to recover a larger sample of cultural material.

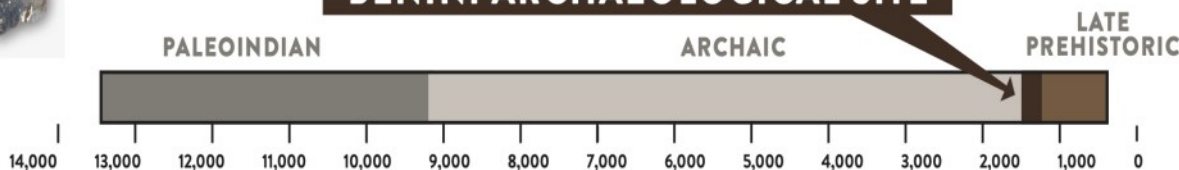


Most of the recovered artifacts were small pieces of flint chips ("debitage") that resulted from the making of stone tools, such as knives and projectile points. The latter are particularly useful in dating archaeological sites because their form changed over time. Two projectile points were recovered from the test excavation, both conforming to a type known as "Dart" that dates to around 1400 years BP (before present). These are not arrowheads, but "dart points" used to tip light spears that were propelled using a spear-thrower or "atlatl."



Dart points are the latest dart point form seen in Central Texas. During or soon after their use, Native people in the region took up the bow and arrow, ushering a period called the Late Prehistoric. Other artifacts recovered from the test excavation show that Native Americans may have camped at the site. These include a few burned rocks, implying food may have been cooked there, and stone fragments with smooth surfaces that possibly came from a metate, a kind of milling stone used in the region to grind wild seeds and acorns into flour.

## BENINI ARCHAEOLOGICAL SITE



**Llano Uplift  
Archeological Society**

P.O. Box 302,  
Kingsland, TX 78639

List of Officers  
President: Jim Wukasch  
jimwuk@gmail.com

Treasurer: Chuck Hixson  
Charles.hixson@gmail.com

Secretary: Joanne Hanifan  
jkhhanifan@gmail.com



**Currently we are meeting at the Falls on the Colorado Museum (2001 Broadway, Marble Falls), whenever we a speaker lined up.**

**LUAS member fees for 2025 are due in January of 2025. \$20 individual; \$25 family**

**Send your check to:**

**LUAS**

**PO Box 302**

**Kingsland, TX 78639**

**Or give your check to**

**Chuck Hixson at the meeting. Thanks!**

**Donations always welcome!**

## Special Notices

### Calendar

See our website at:

[TexasLUAS.org](http://TexasLUAS.org)

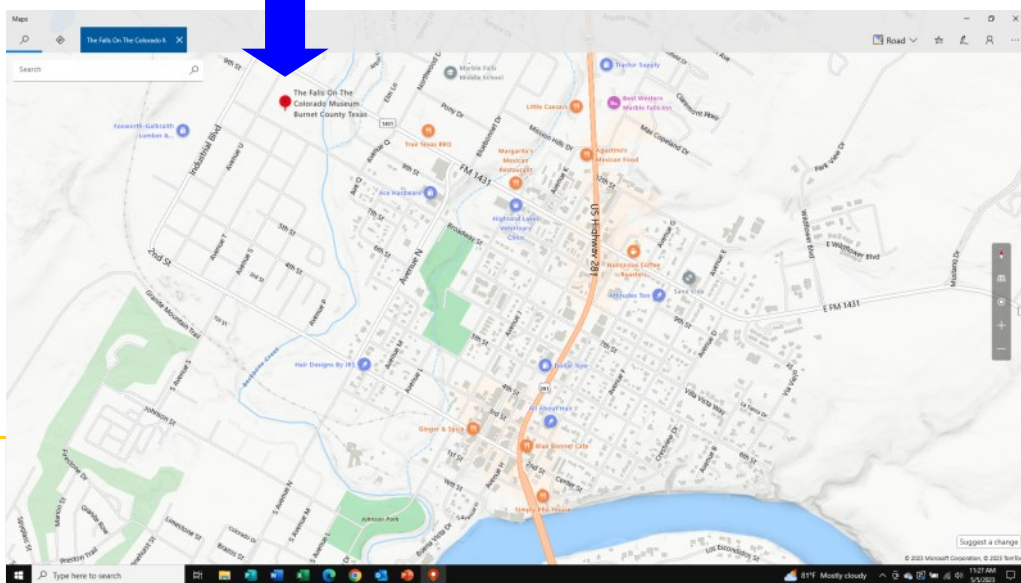
**Note:** To contribute to the newsletter or website please contact David Boyd—  
davidboydrm@gmail.com

\*hardcopy newsletters are in black and white

### Steward's News:

Your local archeological stewards are **Doris Howard (325) 247-2440, Llano Co.** For **Burnet Co.** contact **Jim Wukasch (512) 715-9093.** For **San Saba Co.** contact **Buddy Whitley (325) 372-1335.**

**The Falls on the Colorado Museum  
2001 Broadway  
Marble Falls, Texas**



The Llano Uplift Archeological Society was organized by people interested in the protection, conservation and study of historic and prehistoric materials and sites in the Llano Uplift ("Central Mineral Region") area of the Texas Hill Country.